

The Scoop News
1161 Hillview Dr.
Hastings, MI 49058



The Scoop

Southwest Michigan Seek and Search Club

November 2025 - Edition

When: The Third Tuesday of Each Month at 7 P.M.

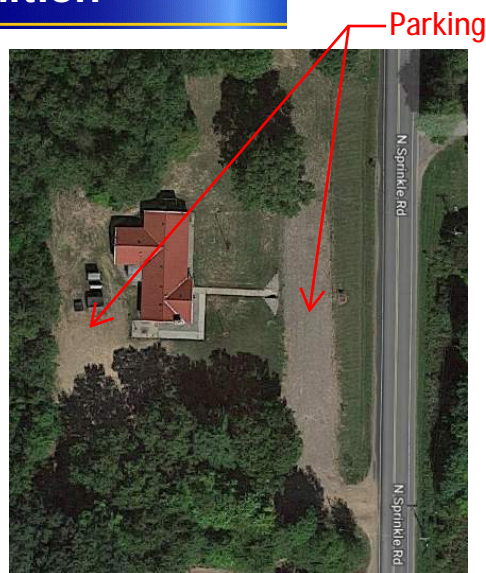
Who: Meetings are open to the public

Where: Kalamazoo Rod & Gun Club
7533 North Sprinkle Road, Kalamazoo, MI 49004

How: From U.S. 131 come North to D Ave. take D Ave. East to North Sprinkle (road curves right and heads south), club is .25 miles on the right from int. of D. Ave. and Sprinkle.

Or

Take U.S. 131 South to D. Ave. exit, take D. Ave. East to N. Sprinkle (directions from here same as Northbound (above)).



"The Scoop" is a monthly publication of Southwest Michigan Seek and Search Club

October 2025 - Finds of the Month

WINNER...#1 Mike W.



JEWELRY

Entries:

1. St. Rose of Lima Catholic Pendant, Alum. – Mike W.
2. Heart Pendant found in a school yard, precious to me – Bill B.
3. Skull Ear Ring, found on beach in Cozumel – John M.

FOM notes:

- All items must be found or acquired since the last meeting.
- Multiples must be found in the same hole.
- One entry per category per member.
- Must be a paid member to enter find of the month.
- Write your name on the back of the entry slip.
- Do not look at names on the back of find of the month slips.
- Check with the President or Vice President if you have any questions as to what category to put an item in.

WINNER...#6 Brian T.



COIN



Close up of Double Die Details

Entries:

1. 1946 Silver Roosevelt Dime – Tim T.
2. 10 Pesos, 50 cents in Mexican money found in Cozumel – John M.
3. 1943D Mercury Dime – Mike W.
4. 1925 Wheat Cent – Tom H.
5. 1914D Barber Dime – Rick S.
6. 1875 Semi-Key Date Double Die Obverse Indian Head Cent – Brian T.

Note: awards for FOM are now 40% silver Kennedy halves.

WINNER...#2 Rick S.



FOB, BADGE, TOKEN

Entries:

1. 1921 Allegan County Dog License, found in school yard – Bill B.
2. Baggage Tag from NY Central, Great Western/Michigan Central R.R. – Rick S.
3. Token, Steins 648 3rd. Ave. New York – John M.

WINNER...#5 Brian T.



MOST UNUSUAL

Entries:

1. Vintage Tootsie Toy – Rick S.
2. Pencil Sharpener found in Cozumel on beach – John M.
3. C and O, Yale Lock – Tim T.
4. Big Natural Copper Nugget found on the Keweenaw Peninsula - Mike W.
5. Civil War Era Kentucky Long Rifle Trigger Guard – Brian T.

November Meeting

- 4 Turkeys given away
- FEATURE RAFFLE: Silver Arrowhead!!!



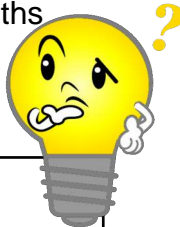
December Meeting

- Christmas Party Meeting (snacks)
- 4 Turkeys given away
- Buy, sell, trade, show night!!

Miscellaneous category for FOM - First Month.

With the beginning of daylight savings time (November 3rd), the Miscellaneous category begins again.

- This is a **non-metal detecting** category, items can be metal but do not have to be metal and can **not be** found with a detector. Must be found/purchased/given to you since last meeting.
- This category is during the winter months only.



Newsletter Tip!!!

If you see text in **blue** that has this in front of it: "https" it is a web-link you can click on in the digital newsletter or you can manually type it in to your web browser's URL field to learn more about a particular subject.

***Raffle Tickets must be purchased before the beginning of the meeting.**

****You don't have to be a member to purchase tickets for the Silver Dollar or the 50/50 raffles.**

SWMSS CLUB MEMBER BENEFITS

1. Find of the Month Entries
 2. Find of the Year Entry
 3. Door Prizes
 4. All Raffle's & the Feature Raffle
 5. Newsletter, Mail and / or Email
 6. Participate in Seeded Hunts
 7. * **Voting Rights**
 8. * **Fish Bowl Prize (drawing every meeting)**
 9. Perfect Attendance (Jan. through Dec.) prize
 10. To Sell or Trade at the "Buy, Sell & Trade Night".
- Exception:** *These items are not extended to associate members.

An "Associate" membership is extended to a paid member's spouse (*must be legally married*), their children and grandchildren. Anyone 18 years and older are considered an adult and will need to purchase their own membership.

A new member can enter their finds in the "Find of the Month" after 1 full month's membership.**

A "new" member is someone that has never been a member before.

Renewal Memberships are due before the meeting starts to participate in the "Find of the Month".

Club Membership is \$25 for the calendar year (January Through December).

Members, Please, "Sign in" at every club meeting. The "Sign In Book" is used to keep record of perfect attendance for the year. The sign in book is on the table with the name tags.

Be sure to renew your membership before the meeting starts to get in on the drawings and raffles.

****Please note:**

To be guaranteed a photo in the slide show for "Find of the Month", there is a **6:45** cut off time.

Please be mindful of this as Anne and Bradley our photographers most months have 60+ photos to take and incorporate into the slide show for judging. We need to maintain this cutoff if we are to finish in a timely manner and ensure everyone has a chance to compete.

***** If any club members would like to be added to the SWMSS Club Facebook group, please contact Mike Walker or Brian Tobias**

Dating your finds (Not with wine and flowers): Part 2

(Cont'd from October's Newsletter)

Form, Function and Material:

Okay, so you've tried to research an item you dug, a little treasure but still can't seem to find out what it is based on any hard research. More often than not the one remaining issue is you don't know what exactly you are looking at, or you do and it is let's say a button but you can't narrow down if it is 21st century, 1900s, 1800s, etc. Maybe you want to know if it was military or civilian?

Every human "artifact" or relic still has a lot of information attached to it, whether it is location found, type of location, material, and its general form.

Those subtle clues need not be subtle. For example, you find a button that is still super shiny silvery type metal and has a wire shank set in a little cone that is actually cast into the back, the back of the button has concentric grooves like a record player. The home (hunting in a field site) was listed only on the 1863 plat map, and nothing after that.

- This metal is "tombac" a type of brass alloy with zinc, tin and lead added, highly resistant to corrosion.
- The concentric lines are telltale marks left by finishing this on a lathe this is called "spun".
- The wire shank in a mound also is telling of the manufacturing type.

This is a tombac style button and this is helpful as those were made from mid 1700s to 1820s!!!

Maybe you just found a crotal or sleigh bell. It has a one piece design with a little square loop of brass at the top, not a screw hole or a pin:

- Decoration - both the top and bottom decorated is usually a sign of age. They went from both the top and bottom being decorated (usually but not always pre 18th century) to just the bottom half (18th-19th century) then none. If you are lucky you'll find a fish scale one (all 17th c or earlier) or one with a face on (mid 16th to mid 17th century).
- Material - grey ones (higher tin content) tend to have an earlier date. The copper ones can be a mix of dates but you are very unlikely to find a grey one that is post 17th century. FYI - the grey ones do not polish up, you'll just damage them!
- Loop (proper name - sprue) - the suspension loops were originally cast in situ and then drilled. Later ones had them added after. As a rule the more crude the sprue the later. They went from small and elegant to big and out of proportion over time.
- Weight - earlier ones have a nice heavy feel in the hand and the later ones are lighter.

These things are all things you can read about in books or more commonly today in many online formats, just Google crotal bell dating for instance and you'll more than likely find the information I've listed above on several sites, in metal detecting forums, blogs, dedicated FB pages.

There are many old books and websites out there that also do fine jobs of helping to identify or give age ranges or even exact dates for items:

Military Buttons: Record Of American Uniform And Historical Buttons, by Albert, Alphaeus H.

Watch Fobs: <https://test.watchfob.watchfob.com/>

Suspender clips/buckles: 1800's Suspender Buckles Paperback – August 17, 2021 by George H Beauvais

Civil War Relics: "Civil War Relics of the Western Campaigns" by Charles S. Harris

The list is long here when it comes to resources. If all else fails look at what it is made of and where it was found and start making some educated guesses as to what it was used for. Finding a bunch of iron in one spot and it looks like an old farm implement? do some Google searching or image searching on your phone and type in the search field farm implement and see what you might accidentally find out :). Was it next to a river or lake? looks like some sort of fishing item? look those up. Things to remember about materials: Aluminum was not used common place much before very end of 1800s early 1900s. Brass and copper were used for more dress items, utilitarian where most moisture would cause rust and would make steal/iron a bad choice before 1900. Stamped copper brass usage took off by the mid 1800s, heavy cast brass before that (why you find cast brass items in colonial settings). One piece brass buttons are almost always 1840s or older. Hope these tidbits help you!!

B. T.



Look us up on the web
www.mytreasureclub.com